

50' WIDE DRAINAGE ESMT. TO VANDENBERG VILLAGE COMMUNITY SERVICES DISTRICT

TRACT 11,417

20' WIDE PUBLIC ACCESS ESMT. TO VANDENBERG VILLAGE COMMUNITY SERVICES DISTRICT

10' WIDE PUBLIC WATER LINE ESMT. TO VANDENBERG VILLAGE COMMUNITY SERVICES DISTRICT

10' WIDE PUBLIC WATER LINE ESMT. TO VANDENBERG VILLAGE COMMUNITY SERVICES DISTRICT

"NOT A PART" WELL SITE NO. 2 VANDENBERG VILLAGE COMMUNITY SERVICES DISTRICT

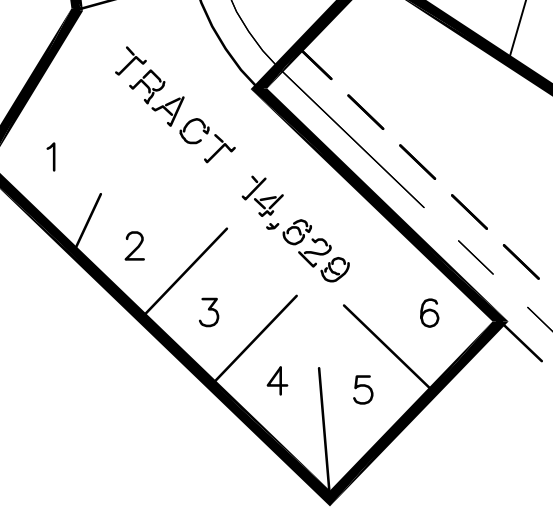
TRACT 10,176

TRACT 10,353

TRACT 14,829

TRACT 10,221

54  
128.45 ACRES (G)  
123.24 ACRES (N)



TRACT 14,829  
1  
2  
3  
4  
5  
6

11

13

48

49

53

52

51

50

54  
128.45 ACRES (G)  
123.24 ACRES (N)

43

42

41

LIFT STATION NO. 1  
PUBLIC SEWER ESMT. TO VANDENBERG VILLAGE COMMUNITY SERVICES DISTRICT

20' WIDE PUBLIC SEWER ESMT. TO VANDENBERG VILLAGE COMMUNITY SERVICES DISTRICT

15' WIDE PUBLIC SEWER ESMT. TO VANDENBERG VILLAGE COMMUNITY SERVICES DISTRICT

15' WIDE PRIVATE DRAINAGE ESMT.

PUBLIC SLOPE ESMT. PER 1898-OR-527

84' WIDE PUBLIC ROAD ESMT. PER 1898-OR-527

20' WIDE PUBLIC SEWER ESMT. TO VANDENBERG VILLAGE COMMUNITY SERVICES DISTRICT

PUBLIC SLOPE ESMT. PER 1898-OR-527

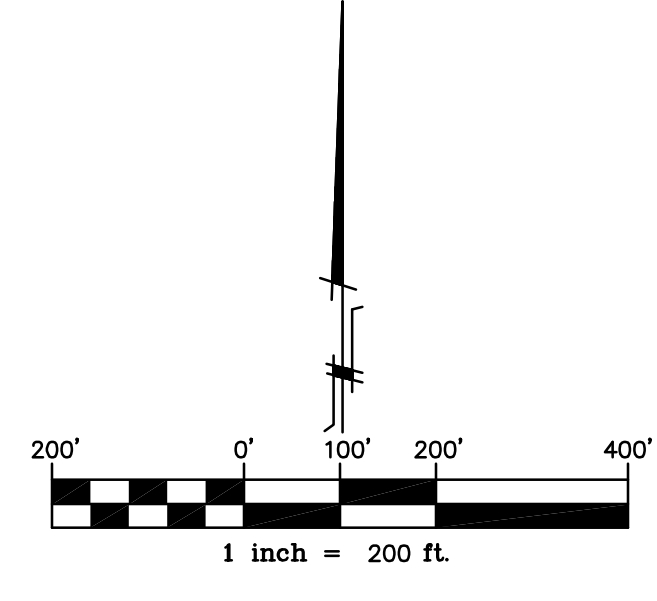
84' WIDE PUBLIC ROAD ESMT. PER 1898-OR-527

30' WIDE PRIVATE WATER LINE ESMT.  
60' WIDE PUBLIC WATER LINE ESMT.

30' WIDE PRIVATE WATER LINE ESMT.

BURTON MESA BLVD.

CLUB HOUSE ROAD



APN 097-371-067  
(LOT 54, CLUBHOUSE ESTATES)



2624 AIRPARK DRIVE  
SANTA MARIA, CA 93455  
PHONE: 805-934-5727  
FAX: 805-934-3448  
DATE: AUGUST, 2011

110392.DWG

JOB: 11039

SHEET 1 OF 1